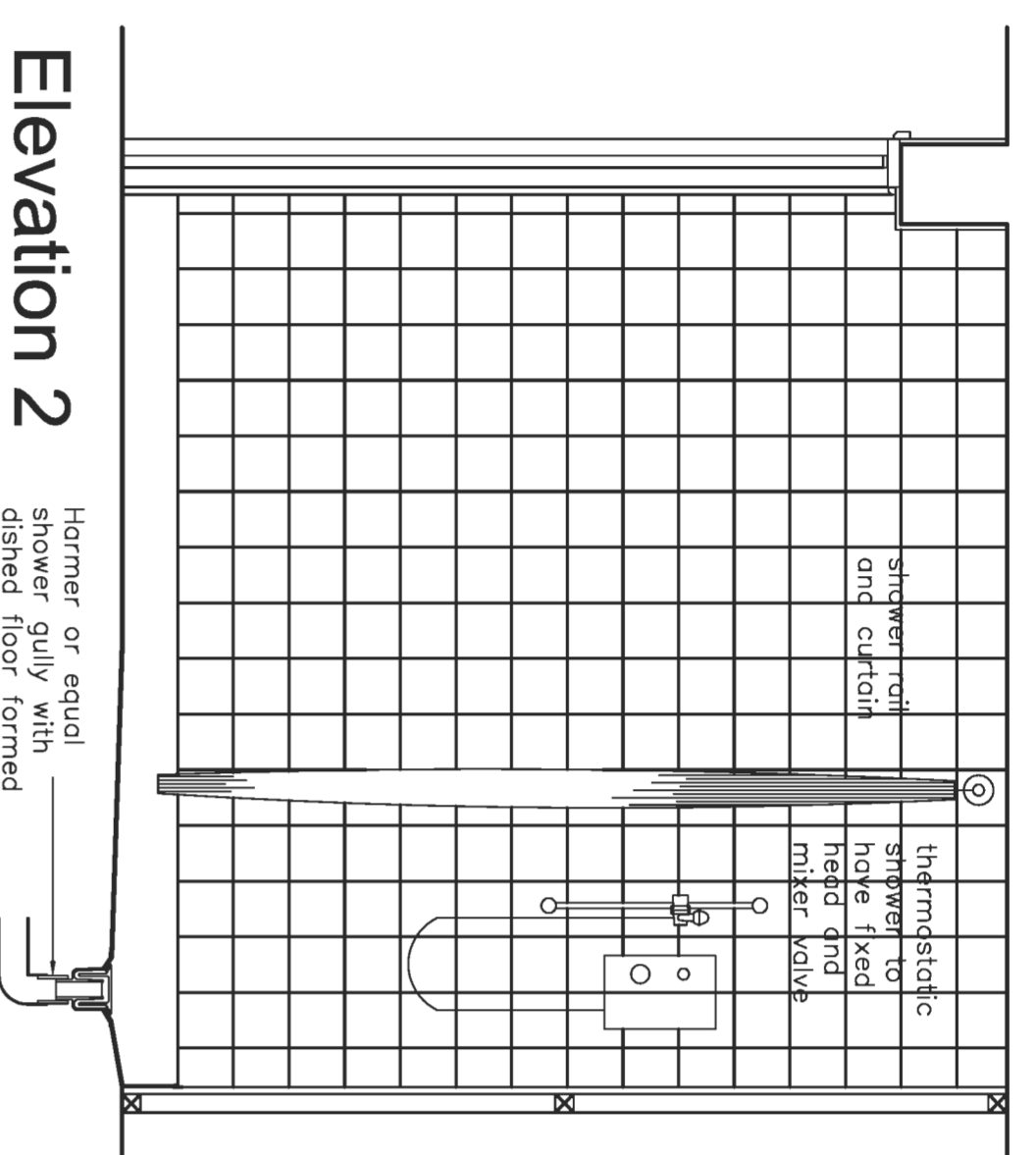
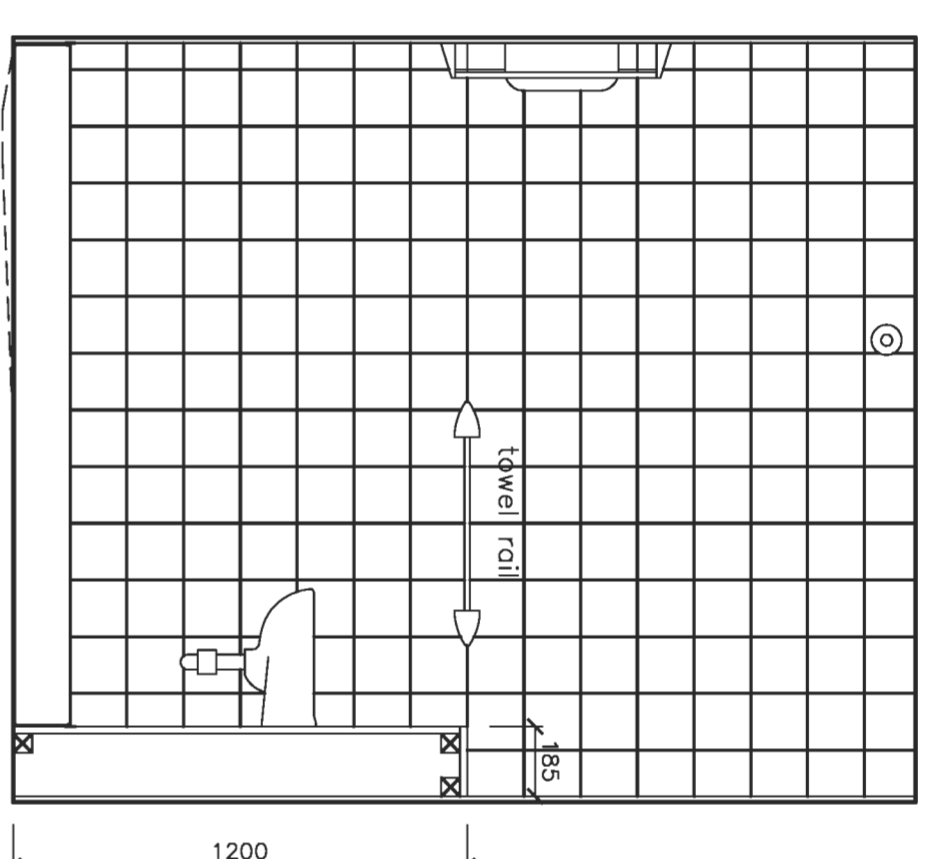


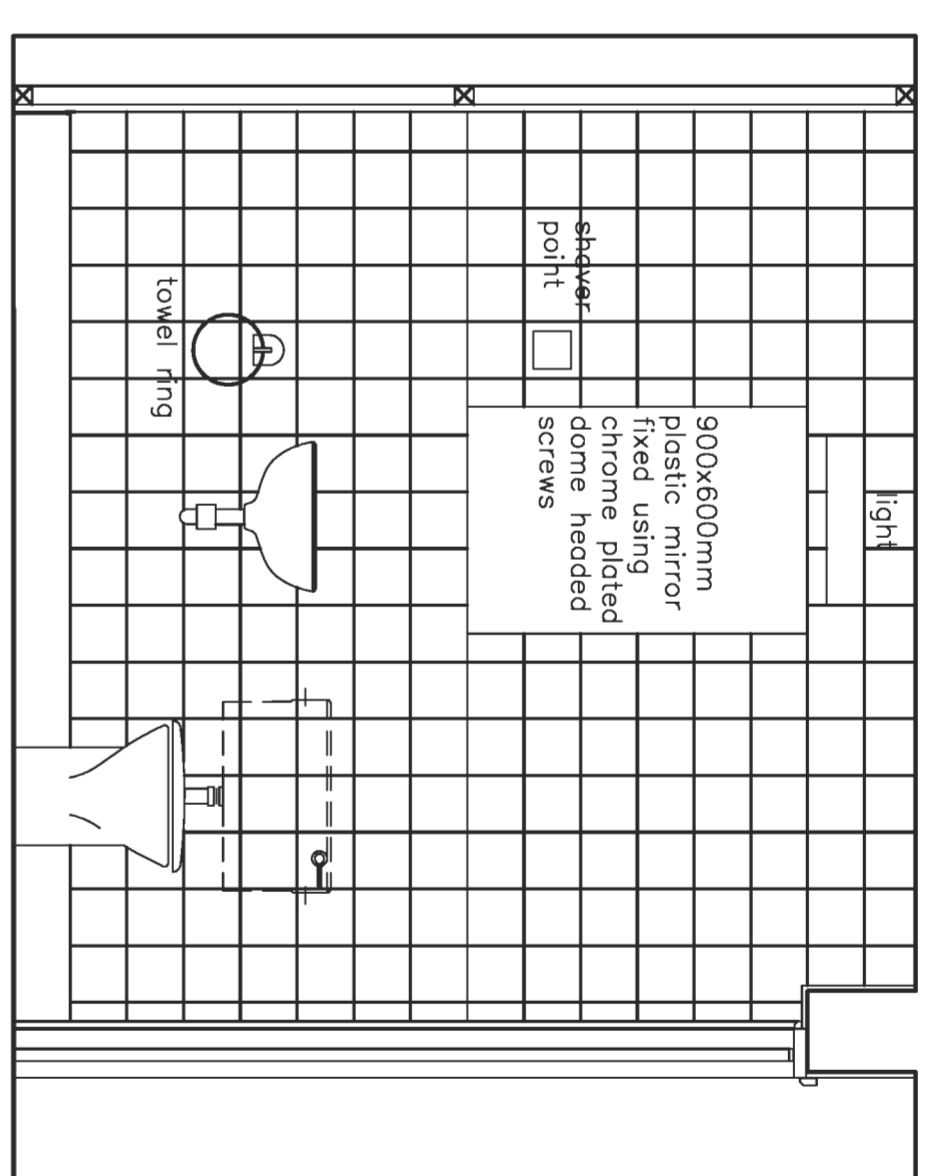
Elevation 1



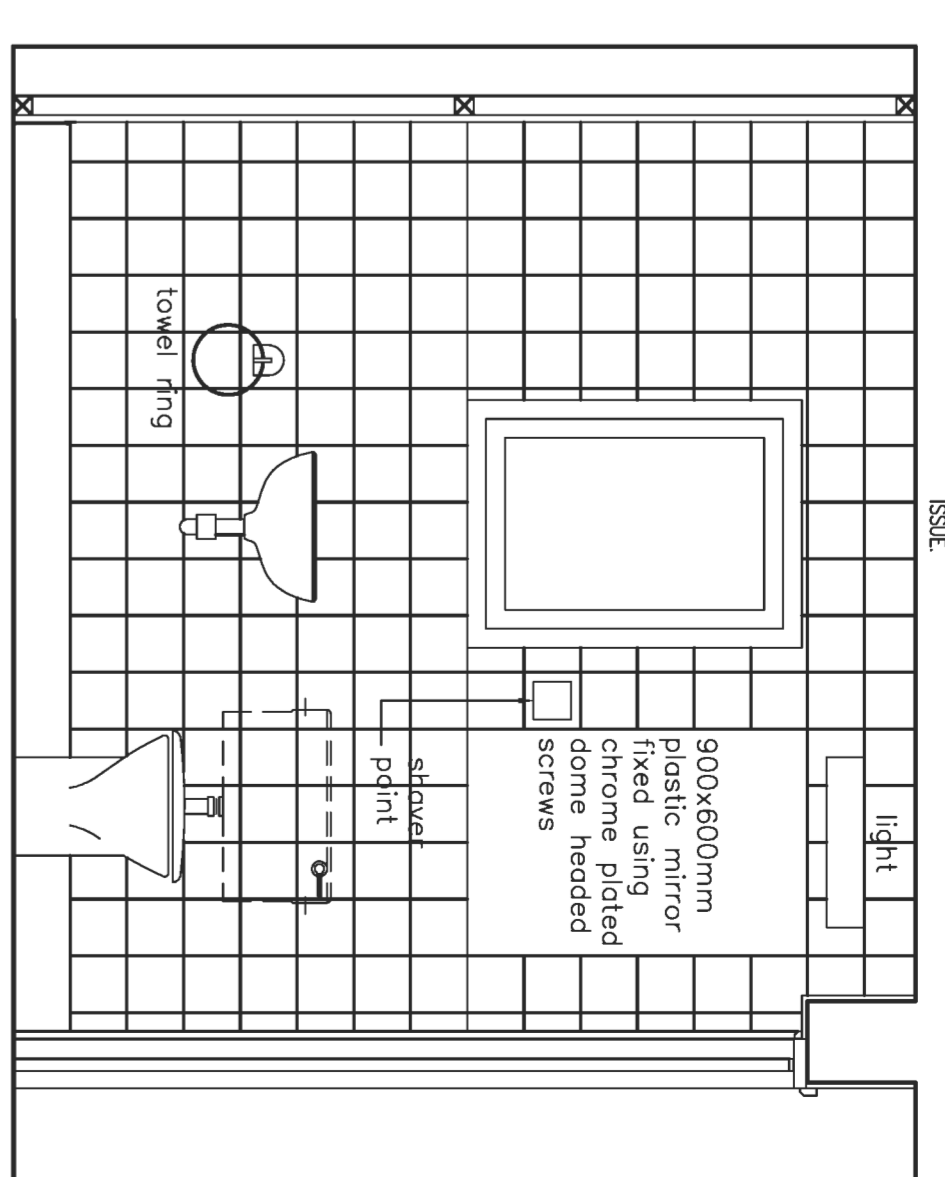
Elevation 2



Elevation 3



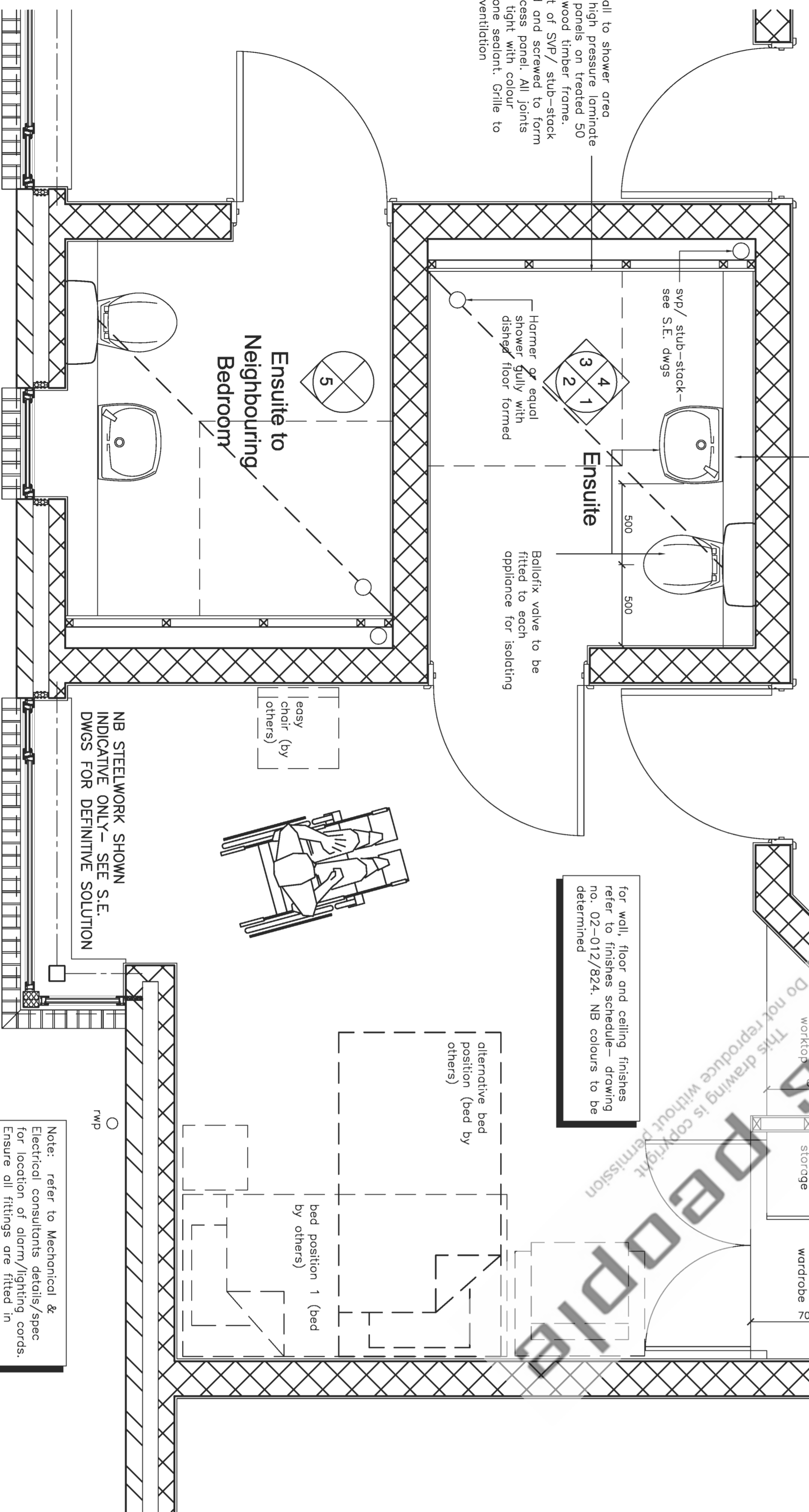
Elevation 4



Elevation 5

Allow for forming low level boxing to conceal drainage pipework from wash hand basin and WC. Form boxing using 19mm high pressure laminate finished rnf panels on treated 50 x 50mm softwood timber frame.
 Front panel to be capped and screwed to form removable access panel. All joints to be sealed tight with colour matched silicone sealant.

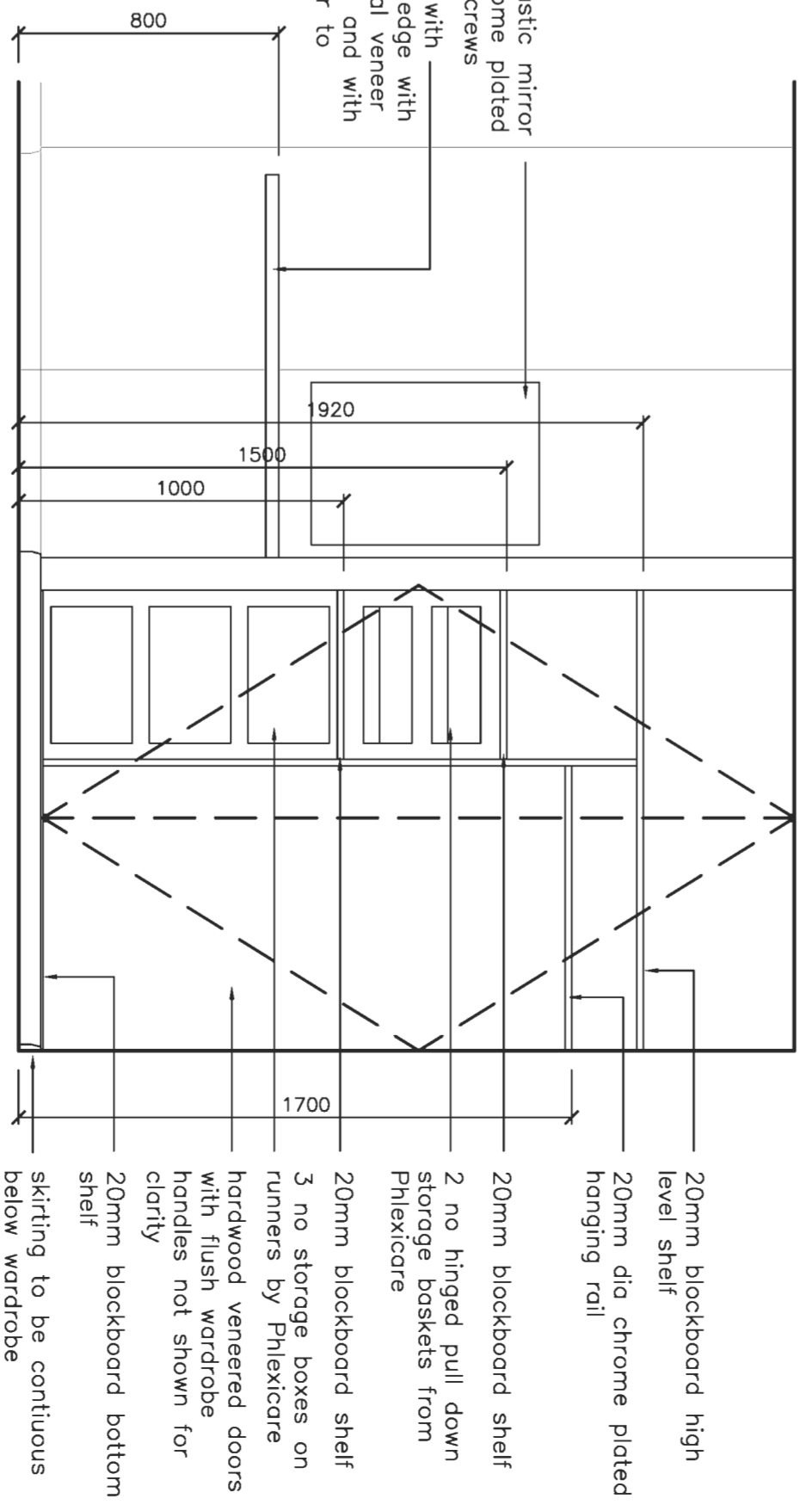
Form false wall to shower area using 19mm high pressure laminate finished rnf panels on treated 50 x 50mm softwood timber frame. Panel in front of SVF/stud-stock to be capped and screwed to form removable access panel. All joints to be sealed tight with colour matched silicone sealant. Grille to be fixed for ventilation



Typical Bedroom & Ensuite Plan

Specify Multiboard or equal heavy duty plasterboard with spon finish on 75x50mm rnf framework
 for wall, floor and ceiling finishes refer to finishes schedule - drawing no. 02-012/824. NB colours to be determined

700x500mm plastic mirror fixed using chrome plated dome headed screws
 400mm worktop with bullnosed front edge with Formica or equal veneer to match doors and with bolting veneer to underside



Wardrobe Elevation (Doors omitted for clarity)

Note: refer to Mechanical & Electrical consultants details/spec for location of alarm/lighting cords. Ensure all fittings are fitted in accordance with BS 8300:2001.

NB STEELWORK SHOWN INDICATIVE ONLY - SEE S.E. DWGS FOR DEFINITIVE SOLUTION

easy chair (by others)

RMP

plans people
DESIGN STUDIO
 PO Box 13241, Studley, Warwickshire B97 9PL
 T 01527 4525 93 F 01527 4525 93
 E plans.people@planspeople.co.uk

client: **Brain Injury Unit**

title: **Typical Bedroom & Ensuite Layout Working Drawing**

scale: **1:20 @ A1** date: **Jan 05**

drawing no: **012-501** amendment: